

# Glidewell HT™

## IMPLANT SYSTEM

*Formerly the Hahn™ Tapered Implant System*

### Guided Surgery System



**PLACE IMPLANTS WITH MAXIMUM EFFICIENCY AND PREDICTABILITY**

888-303-3975 | [glidewell-ht.com](http://glidewell-ht.com)

# INTRODUCTION

With the **Glidewell HT™ Implant Guided Surgery System**, you can place more implants in less time while maximizing predictability and lowering surgical and restorative costs. Featuring the latest advancements in digital treatment planning and dental implant technology, this innovative system enables clinicians of all experience levels to deliver premium Glidewell HT Implants with the utmost precision and confidence.

By executing a highly precise, digitally guided surgical procedure, clinicians can place Glidewell HT Implants in the exact location needed for a predictable, esthetic outcome, while avoiding vital patient anatomy and surprises on the day of surgery.

To maximize the predictability and profitability of your implant cases, utilize Glidewell's Digital Treatment Planning (DTP) service to fabricate your surgical guides. Using the latest advancements in 3D treatment planning software, our DTP team can help you implement a restorative-driven treatment plan, with considerable savings thanks to the Glidewell HT Implant Bundle.

Eliminate the guesswork, reduce your costs and make Glidewell HT guided surgery part of your practice today.

“Whether you're seeking precision and efficiency for a single-unit implant or a safe, predictable surgical procedure for a full-arch reconstruction, Glidewell's DTP team can help set your case up for an esthetic and highly functional outcome — every time.”

**—Jim Glidewell, CDT**  
Founder and President of Glidewell  
*Recipient of the 2023  
AAID Isiah Lew Memorial Research Award*



## ABOUT THE MANUFACTURER

Prismatik Dentalcraft was established in 2006 and includes a carefully assembled team of experts with a proven track record in the design, engineering, and manufacture of dental implants. Bolstered by a support staff of highly respected researchers, material scientists, clinical specialists, and dental technicians, Prismatik is dedicated to advancing implant therapies by combining proven treatment protocols with progressive materials, technologies and techniques.

### Vertical Integration



Our ownership of the entire manufacturing process behind our implant products ensures quality and helps reduce costs for our customers.

### State-of-the-Art Equipment



Our Swiss-type lathes and CNC milling machines are ideal for implants and prosthetics requiring extreme precision.

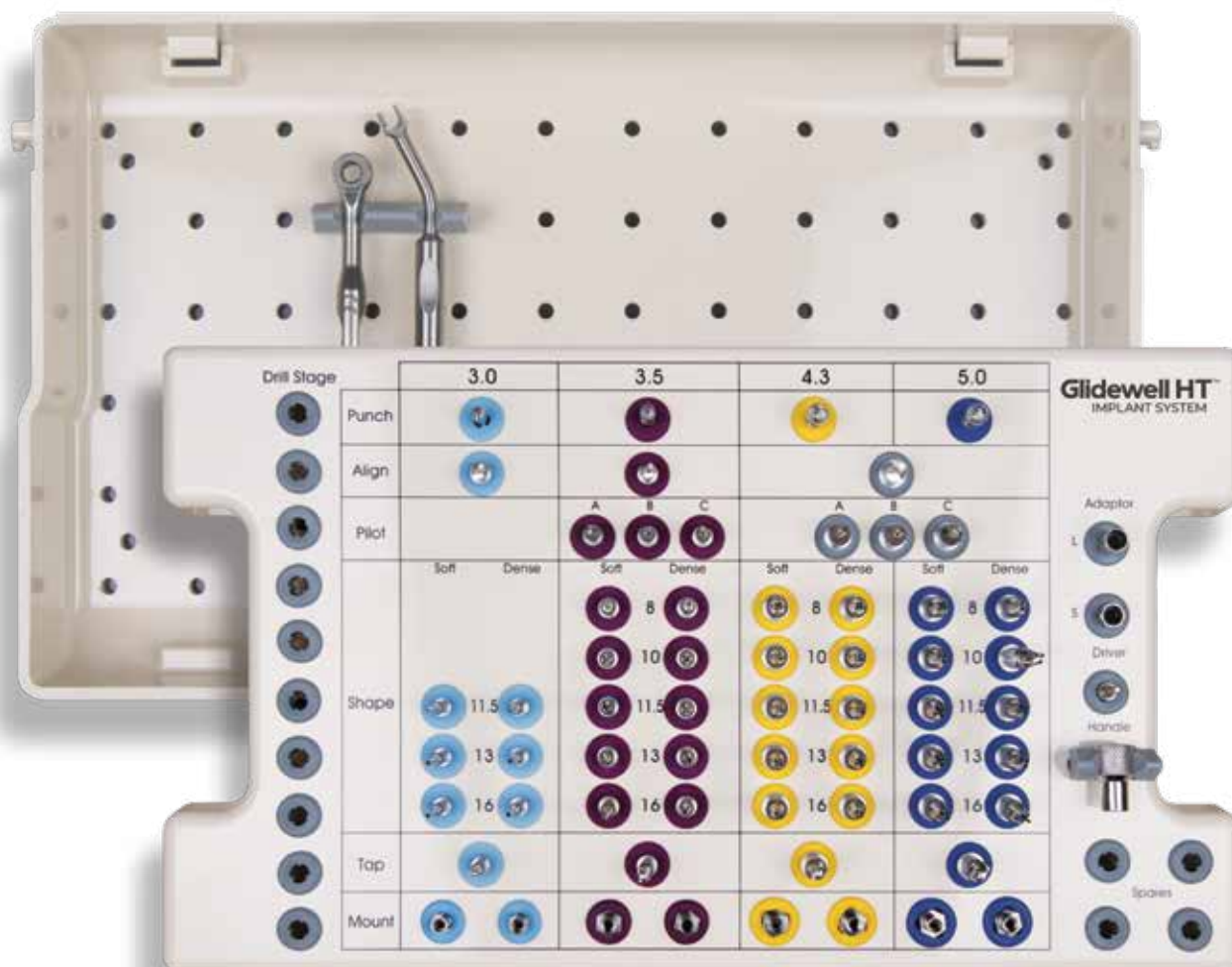
### Made in the U.S.A.



Our ISO-certified facility in Irvine, CA, operates under FDA Current Good Manufacturing Practices (CGMPs).

# FEATURES AND BENEFITS

- **Streamlined, easy-to-follow surgical protocol** — The Glidewell HT Guided Surgical Kit includes a straightforward, user-friendly drilling sequence
- **Simplified instrumentation** — Drills include built-in depth stops and diameter-specific sizes that eliminate the need for guide keys or handles
- **All-in-one kit** — Fully guided from start to finish for 3.0, 3.5, 4.3 and 5.0 mm Glidewell HT Implants
- **Cost savings** — Take advantage of Glidewell HT bundle pricing with Glidewell Digital Treatment Planning and achieve a predictable, restorative-driven outcome

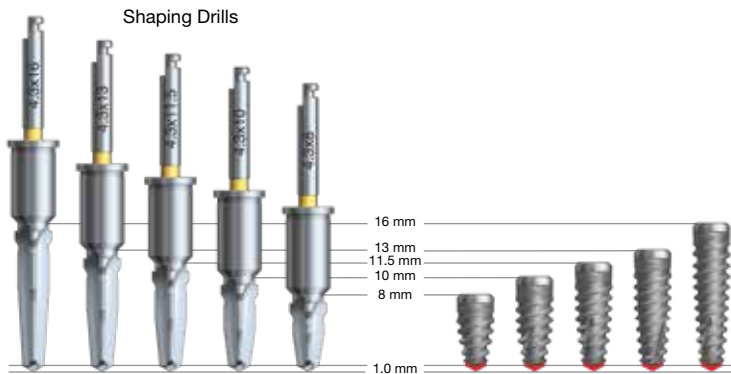
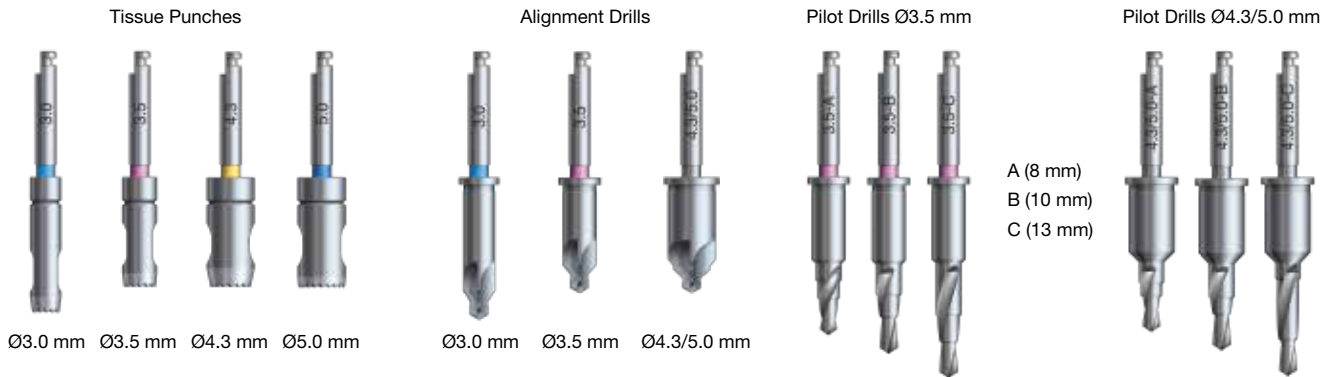


# INSTRUMENTATION

The Glidewell HT™ Implant Guided Surgery System allows clinicians to deliver Glidewell HT Implants with the highest level of predictability, accuracy and efficiency. Designed for ease of use, this system works in conjunction with digital treatment planning and case-specific surgical guides.

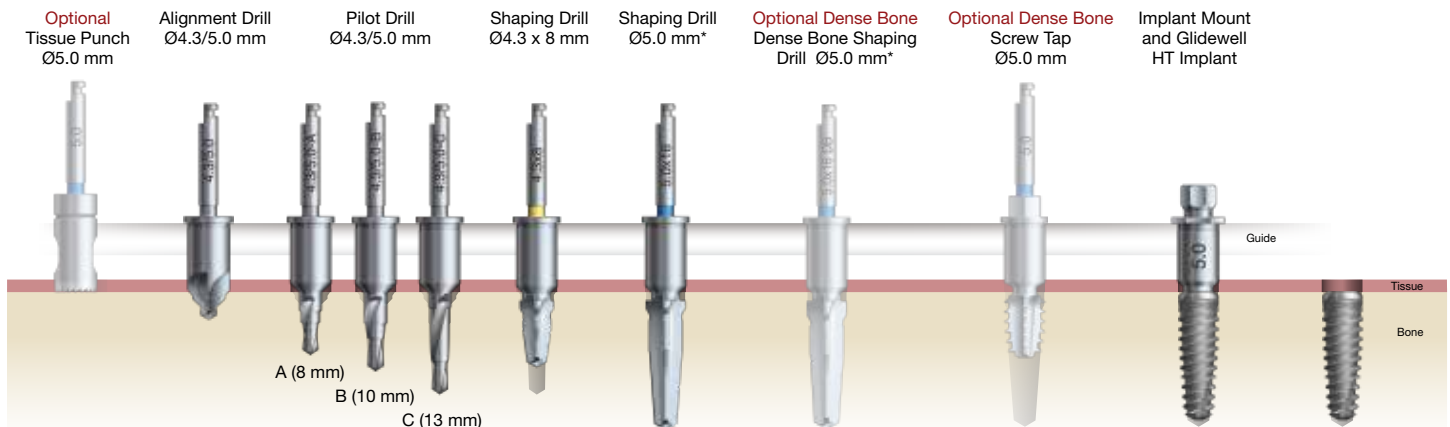
Tissue Punches match the diameter of the prescribed implant.

Drills are diameter-specific and feature a flange stop for depth control.



For added safety, each Shaping Drill is implant-specific to precisely determine both diameter and depth of the osteotomy.

## Glidewell HT™ Implant Ø5.0 mm



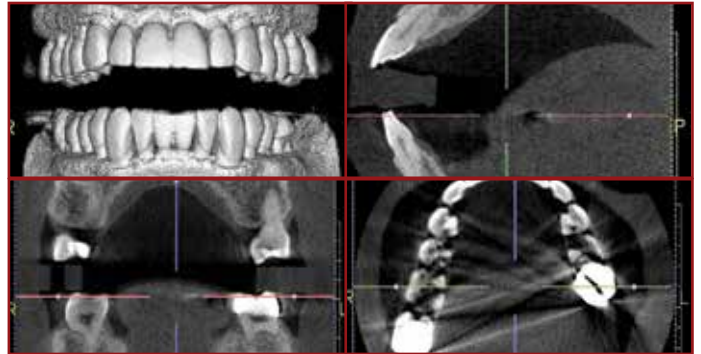
*\*Available in various lengths.*

All instrumentation is manufactured in the U.S.A. or Switzerland. For specific country of origin, please refer to the individual product label.

# PROCESS OVERVIEW



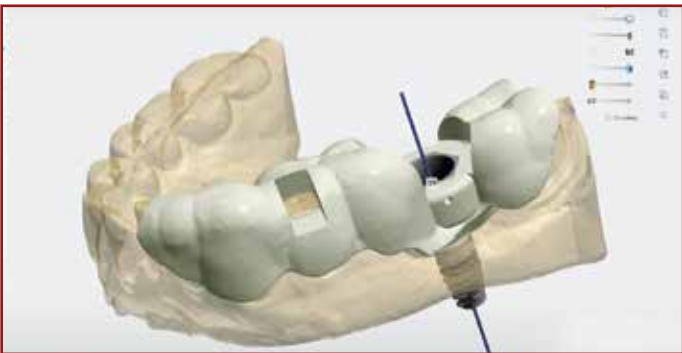
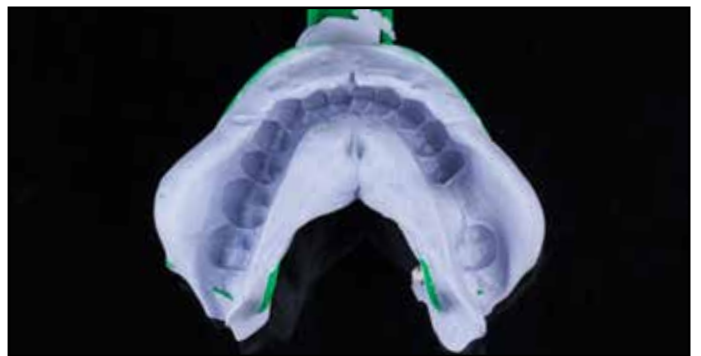
1. Perform a standard diagnostic workup and clinical exam.



2. Obtain a CT or CBCT scan.



3. Take digital or physical impressions.



4. Submit patient scan files and impressions to Glidewell or to the surgical guide manufacturer of your choice.



5. The case-specific surgical plan and guide are created.

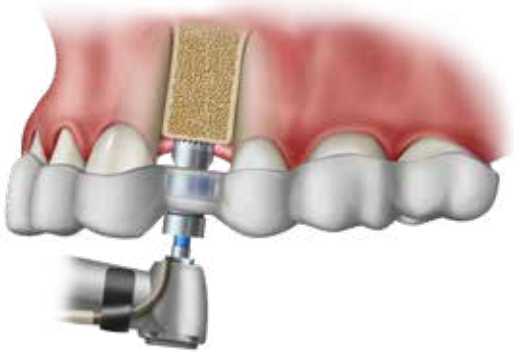


6. Perform guided surgery per the accepted treatment plan.

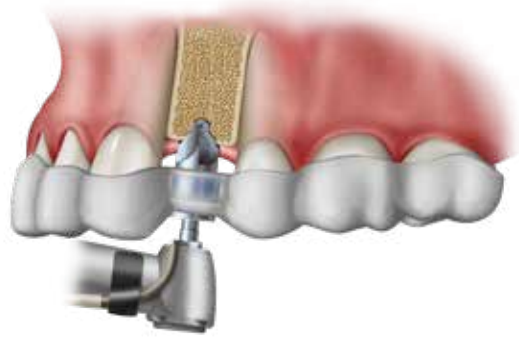


7. The digital treatment plan and guide facilitate a predictable, esthetic outcome, with minimal discomfort to the patient.

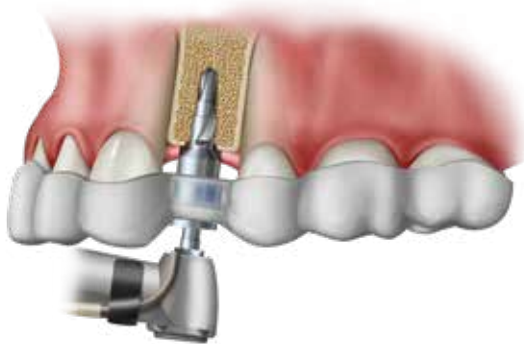
# OVERVIEW OF THE SURGICAL PROTOCOL



The surgical guide is seated, and the Tissue Punch exposes the bone.



The Alignment Drill creates the initial osteotomy.



The Pilot Drill deepens the osteotomy.



The Shaping Drill widens the osteotomy.

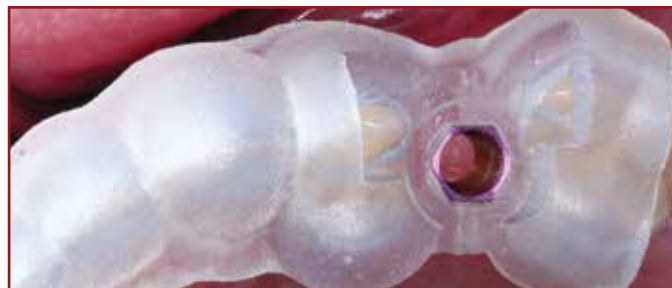


The Implant Mount is used to control the depth and set the rotation of the implant.



The Mount Wrench aids with final alignment prior to removal of the Implant Mount.

# CASE EXAMPLE



A case-specific Glidewell surgical guide and plan were used to restore tooth #13 with a 3.5 x 10 mm Glidewell HT Implant.



A Tissue Punch facilitated a flapless approach.



An Alignment Drill created the initial osteotomy.



Pilot Drills were used to deepen the osteotomy.



Shaping Drills widened the osteotomy to the appropriate diameter.



The implant was attached to an Implant Mount. Then, the implant was placed through the guide and into the osteotomy.



A wrench provided greater control during final seating.



The Mount Wrench helped achieve proper alignment prior to removal of the mount and surgical guide.



Excellent primary stability was evident, and a healing abutment was placed.



The procedure was atraumatic and straightforward. This photo, taken immediately after surgery, demonstrates the superior results of a guided surgical approach.

**NOTE:** Each surgical guide includes a case-specific surgical plan. As with any surgical procedure, please observe all necessary protocols and precautions.

# Glidewell HT™

## IMPLANT SYSTEM

Formerly the Hahn™ Tapered Implant System

Official implant of the



Distributed by



For more information, please visit:  
**glidewell-ht.com** or call: **888-303-3975**



Designed & Manufactured  
in the U.S.A. by



(A wholly owned subsidiary of Glidewell Laboratories)  
2144 Michelson Drive • Irvine, CA 92612, USA