



# Digital Implant Treatment Planning

Utilizing NobelGuide™

Partially Edentulous Cases

## Introduction

Through 3-D imaging and virtual software, you have a tremendous amount of information to plan your implant cases, including the patient's anatomy and the ideal prosthetic positions of the teeth to be replaced. Our Digital Implant Treatment Planning service allows you to easily integrate this technology into your practice.

This guide is intended to walk you through the Digital Treatment Planning and Guided Surgery process for Nobel Biocare NobelGuide. Items required to utilize NobelGuide include:

- A Radiographic Guide
- A dual CT scan
- A Digital Rx and CT scan files (DICOM)
- Guided Surgical Kit from Nobel Biocare

A critical step in the NobelGuide process is the accurate fabrication of the Radiographic Guide (Fig. 1). This appliance, worn by the patient during the CT scan, sets the ideal position of the teeth to be replaced. The scan of the Radiographic Guide is also used to fabricate the Surgical Template.

*Note: Utilizing the patient's existing partial or flipper is not recommended.*

## Submitting a Digital Rx

Our secure online portal allows you to submit your Rx and CT scan files with ease. You can also access all information related to your case, including a viewer version of your digital implant plan, through your online account. To login, visit [inclusivedental.com](http://inclusivedental.com) (Fig. 2).

- Select "Treatment Planning" on the homepage, then "Dentist" under "Submit Digital Case."
- Sign in to "My Account" (Fig. 3). To set up your online account, please call Customer Service at 800-854-7256.
- Completely fill out Digital Rx (Fig. 4), including how you will be sending your CT scan files (Fig. 5).
- Print Digital Rx and include it with your impressions and bite registration when ordering a Radiographic Guide.

*Note: You will receive an e-mail notification of your submission.*



Fig. 1 Radiographic Guide



Fig. 2 Start by logging on to our website.



Fig. 3 Sign in to "My Account."



Fig. 4 Fill out Digital Rx.

Fig. 5 Select scan submission option.

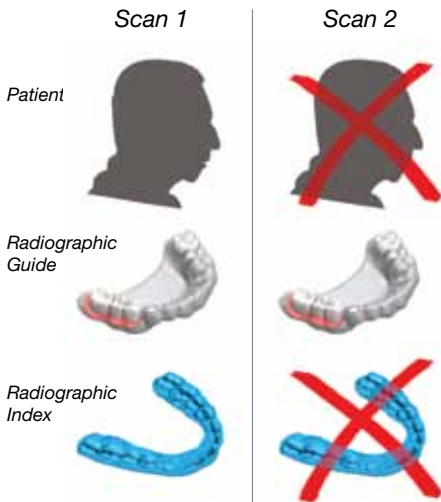


Fig. 6 Dual CT scan

Fig. 7 Upload and send DICOM folders.



Fig. 8 Web conference

Fig. 9 Accepting the plan

## ■ First Appointment

- Utilizing a stock tray, take full-arch impressions and a bite registration.
- Print Digital Rx and include it with your case.

**Important:** The guided parallel-walled drills are 10 mm longer and the guided tapered drills are 6 mm longer than the standard drills. **The patient's vertical opening should be evaluated to ensure he or she is a candidate for Guided Surgery.**

## ■ Second Appointment

- Try-in Radiographic Guide and Radiographic Index.

*Note: Radiographic Index is a bite registration of the Radiographic Guide to the opposing dentition. It is designed to keep the Radiographic Guide fully seated during the CT scan.*

- Send the patient for a dual CT scan (Fig. 6). Include a copy of the NobelGuide scanning protocol with your Radiographic Rx.

**NobelGuide requires a dual scan:** One scan is of the patient with the Radiographic Guide and the Radiographic Index in place. The second scan is of the Radiographic Guide alone. A copy of the scan protocol is available at the bottom of the NobelGuide section of our website.

**Important:** Ensure the Radiographic Guide is completely seated during the patient scan. In the second scan, the Radiographic Guide should be up off the metal table or bracket in the same orientation it was in during patient scan.

### ■ Submit DICOM Folders

- Click on the link in the e-mail notification verifying receipt of your Digital Rx. Upload and send the patient scan as well as the Radiographic Guide DICOM folders (Fig. 7).
  - a. Click on "Browse" and locate the DICOM folders.
  - b. Click "Attach."
  - c. Click "Send."

### ■ Web Conference

Once the draft of your plan is prepared, you will be contacted by the Digital Treatment Planning administrator to schedule a Web conference to review and finalize your digital plan. If you are part of a surgical-restorative team, we encourage all members to take part in the Web conference (Fig. 8).

### ■ Reviewing and Accepting Digital Plan

All information regarding your case can be accessed through "My Account."

- Sign in to "My Account" by clicking on "Treatment Planning," then "Dentist" under "Submit Digital Case."
- Click on "Open Cases" under "Case Status and Shipping" in the toolbar.
- Select "Details" for the selected case. Here you can access:
  - a. Your original Digital Rx
  - b. Pathology Report (if one was ordered)
  - c. Plan Viewer

You can download a viewer version of your plan. This includes full functionality of the software except adding, deleting or moving the implants.

- Accept the plan:
  - a. Click on "Plan Viewer/Approval."
  - b. Check the "Accept" box, fill in your electronic signature and license number (Fig. 9).
  - c. Click "Submit."

*Note: The Surgical Template for your case will not be ordered until you submit your acceptance.*

**Important:** You, as the treating clinician, are responsible for the plan. Carefully review your plan before you accept it.

Upon receipt, the Surgical Template will be inspected and, if ordered, the master cast and provisional restoration fabricated.

### ■ Third Appointment

- Try-in Surgical Template and Surgical Index to verify fit.

### ■ Fourth Appointment

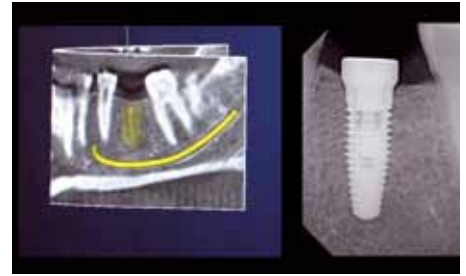
- Perform Guided Surgery procedure per NobelGuide protocol (*Fig. 10, 11*). Deliver immediate provisional if indicated.

### ■ Follow-Up Appointments

- Schedule follow-up and recall appointments following standard implant protocol. Continue to final restoration when appropriate (*Fig. 12*).



**Fig. 10** Guided Surgery



**Fig. 11** Post-op PA compared to digital plan



**Fig. 12** Final restoration



# Lab Fees

## Digital Treatment Planning provides total control for implant restoration

### ■ NOBEL BIOCARE NOBELGUIDE™

NobelGuide consists of one Surgical Template per case.  
A NobelGuide Surgical Kit is required.

NobelGuide Surgical Template for 1 implant  
NobelGuide Surgical Template for 2-4 implants  
NobelGuide Surgical Template for 5+ implants  
Packages include: Digital Plan and Surgical Template

NobelGuide Surgical Template for 1 implant  
NobelGuide Surgical Template for 2-4 implants  
NobelGuide Surgical Template for 5+ implants  
Packages include: Digital Plan, Radiographic Guide and Surgical Template

Digital Plan  
Radiographic Guide (Partially Edentulous)  
Radiographic Guide (Fully Edentulous)

*NobelGuide is a trademark of Nobel Biocare.*

### Quick Reference

	Doctor	Glidewell
<b>1st Appointment</b>	Take impression and bite registration. Fill in and submit Digital Rx.	Pour and articulate models. Fabricate Radiographic Guide and Index.
<b>2nd Appointment</b>	Try-in Radiographic Guide and Index. Send patient for dual CT scan. Upload CT (DICOM) folders.	Convert DICOM files in NobelGuide software. Draft implant plan based on Digital Rx.
<b>Web Conference</b>	Review and finalize plan.	Post Viewer version of plan.
<b>Accept Plan</b>	Accept plan through "My Account."	Order Surgical Template. QC Surgical Template on model. Fabricate Surgical Index (if indicated). Fabricate master cast and provisional restoration (if prescribed).
<b>3rd Appointment</b>	Try-in Surgical Template and Surgical Index.	
<b>4th Appointment</b>	Perform Guided Surgery procedure per NobelGuide protocol. Deliver immediate provisional (if indicated).	
<b>Follow-up and Recall Appointments</b>	Schedule per standard implant protocol. Continue to final restoration when indicated.	



**866-497-3692**  
[www.glidewelldental.com](http://www.glidewelldental.com)