

## SimPlant™ Viewer Instructions

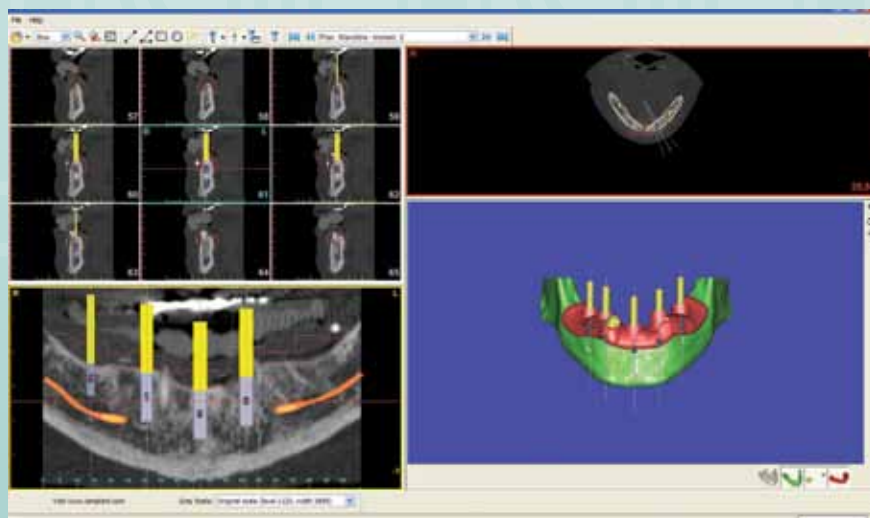
The SimPlant View allows you to review a plan. It does not allow you to make changes to the plan (move, add or delete implants).

Note– First time users will need to download the viewer application from the Materialise site. The link from your “My Accounts” page will direct you to the site.

Below is a brief explanation of the tools to review your plan. If you want additional details, please refer to the “Help” section.

Compatible PCs	Minimum System Requirements	Recommended System Requirements
Operating System	Windows XP or Vista  Intel-based Mac (Computer should be booted from Windows and not Mac OS X)	Windows XP or Vista  Intel-based Mac (Computer should be booted from Windows and not Mac OS X)
Processor	Pentium III at or above 600MHz	Intel Core 2 CPU at or above 2GHz
Internal Memory	256MB RAM (512MB for Vista)	2GB RAM or more
Graphics Card	64MB supporting 16-bit color at 1024x768	128MB supporting 32-bit color and OpenGL or Direct3D at or above 1024x768  NVIDIA 6600, 6700, 6800, 7600, 7800, 7900, 8500, 8600, 8800  GeForce Go 7600, 7800, 7900
Monitor Resolution	1024x768 or higher	ATI X1700, X1800, X1900, X2600, X2900, X3650, X3850
Internet Connection	Hi-speed broadband DSL or Cable modem	Hi-speed broadband DSL or Cable modem

*The screen is split into four quadrants:*



*Cross-sectional slices around the selected implant*

*Panoramic view*

*Axial slice*

*3D view*

# Toolbar

The icons on the toolbar allow you to perform various functions, such as zooming on the images, making measurements and changing the implant being viewed.



**Here is a quick review of the functions of each key:**



Magnifying tool allows you to zoom in on an object.



Zooms out of an object.



Allows you to display a quadrant view on the whole screen; click this icon again to return to the split screen.



Measurement tool, allows you to click on two points to measure the distance between those two points.



Angle tool, allows you to measure angles within the images.



This tool allows you to measure the area and average density within a rectangular region.



This tool allows you to measure the area and average density within an elliptical region.



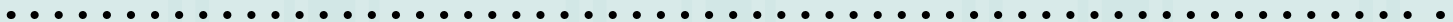
You can show or hide various items (e.g., abutments, restorative spaces, etc.) from this drop down menu.



This lists the implants in your plan.



The Navigation Toolbar allows you to scroll through the implants in your plan. Each implant is numbered. The views change based on the implant selected.



## 3D Toolbar

The icons on the right side of the 3D image allow you to move, rotate and choose various views of the object:



With this tool you can view the 3D object from the front, back, right, left, top and bottom.



This tool allows rotation of objects in the 3D screen.



This tool allows panning of objects in the 3D screen.



*The icons below the 3D panel allow you to show or hide various objects in the screen.*

Once you have reviewed and are satisfied with your plan, please close the SimPlant View. You can complete the process by clicking in the "Acceptance" box and then filling in your name, license number and date. If you have any questions or wish to modify the plan, call us at (800) 839-9755 to request a WebEx Meeting.



**GLIDEWELL  
LABORATORIES**

**800-839-9577**  
**www.glidewelldental.com**

SimPlant is a trademark of Materialise Dental.

GL-1841-0110