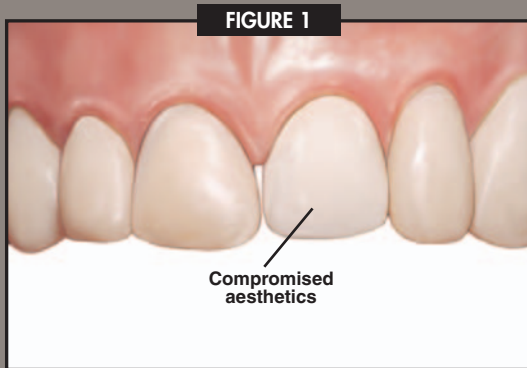


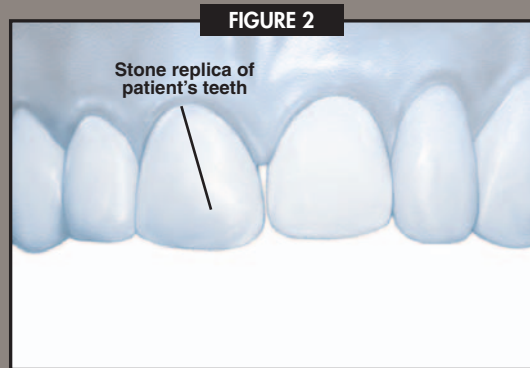


The Temporization Stage: A Blueprint for Successful Aesthetic Restorations

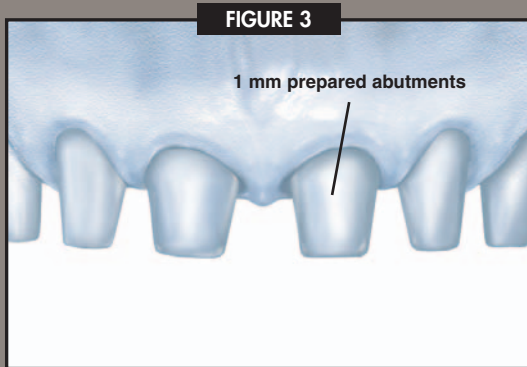
The precise fit of the definitive prosthesis depends on the establishment and maintenance of proper clinical dimensions during the provisional phase. BioTemps provisional restorations enable the laboratory to simulate the morphology of the final restoration. These acrylic restorations are aesthetic, cost effective, and can provide the clinician with a predictable method of improving case acceptance.



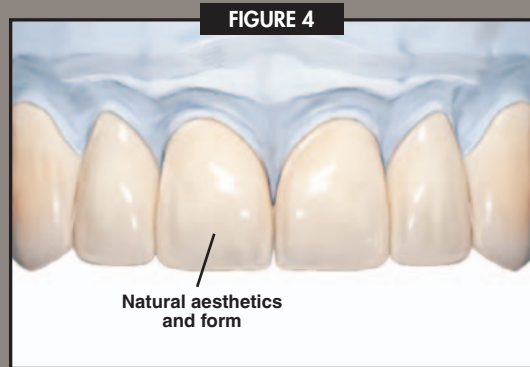
Preoperative facial view of unaesthetic teeth in the maxillary anterior. Note the compromised form, color, and integration.



A duplicate of the preoperative model will be prepared in the laboratory before the patient's teeth are prepared chairside.



The technician will prepare the abutments in accordance with the laboratory prescription using a conservative 1 mm preparation.



The acrylic provisional restorations (BioTemps, Glidewell Laboratories, Newport Beach, CA) are fabricated and returned to the clinician.



We'll have them there before you even prepare!

With BioTemps, you can provide your patients with a beautiful smile as soon as you prepare their teeth. Your patients no longer need to postpone treatment for fear that their temporaries will look unnatural. Send us your impression or pre-operative model, and within five days we will do the rest. After preparation, you simply reline and cement the BioTemps.

For more information call us at

800.471.9757

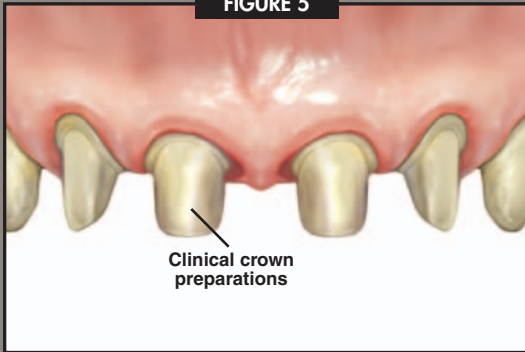
www.glidewell-lab.com





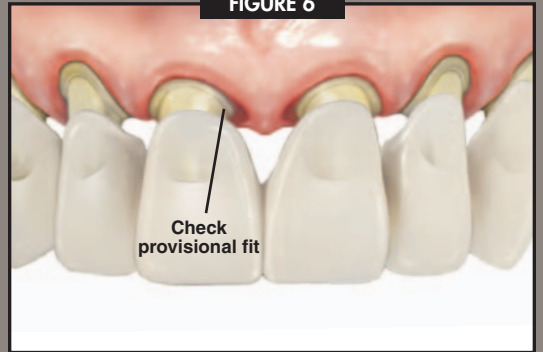
Aesthetic Provisionalization of the Maxillary Anterior

FIGURE 5



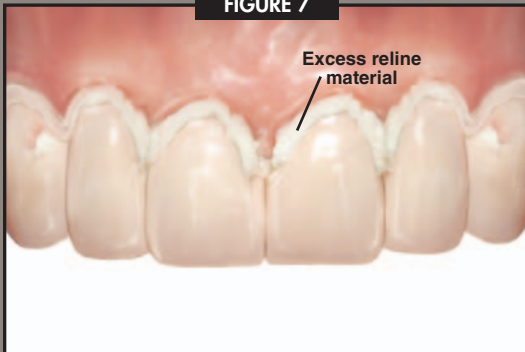
The maxillary anterior teeth are prepared for full-coverage crowns. Reduction on the natural teeth is greater than the provisionals.

FIGURE 6



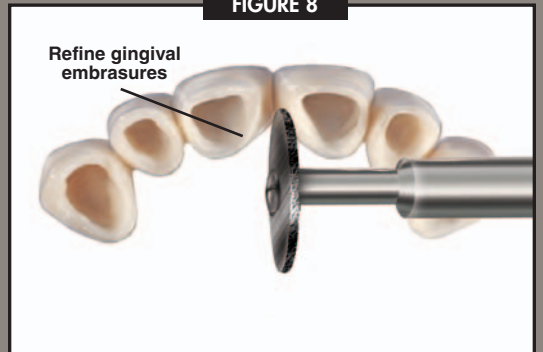
The provisional restorations are seated intraorally to evaluate fit and, if necessary, adjusted to ensure a passive seat before reline.

FIGURE 7



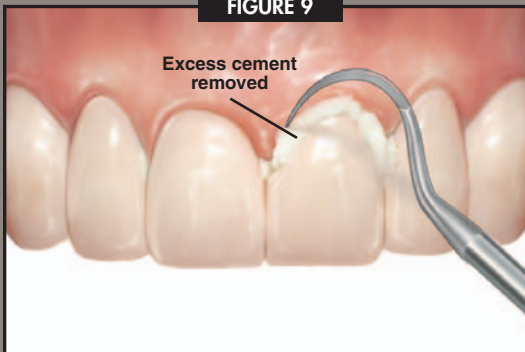
The provisional restorations are relined with acrylic to the final clinical preparations for ideal fit and retention.

FIGURE 8



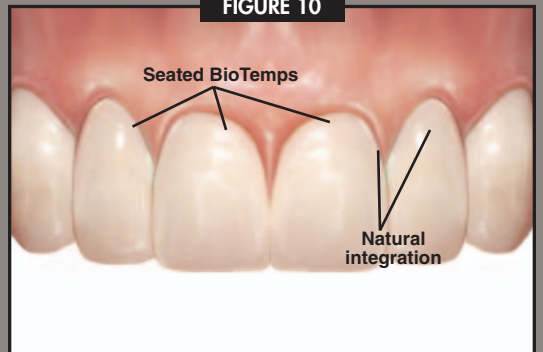
A flexible diamond disc is then used to develop the gingival embrasures and refine the marginal definition.

FIGURE 9



The provisional restorations are seated with provisional cement and will maintain the patient's soft tissue contour and preserve the clinical condition.

FIGURE 10



The BioTemps restorations will provide the patient with an aesthetic prosthesis during the fabrication of the definitive restorations.